

# QUARTZ CREMONA DB



# DESCO

**DESCO QUARTZ CREMONA SERIES** is a strata applied resin with multi-sized aggregates. It delivers a mosaic look with synthetic aggregates in vivid colors. Available in varying sizes of factory colored aggregates. Top coats are offered in different sheens, textures and color stability.

## TYPICAL USES

- Biotech
- Hospitals
- Schools
- Laboratories
- Stairs

## PHYSICAL PROPERTIES

### Compressive Strength

ASTM C-579..... 10,000 psi

### Tensile Strength

ASTM C-307..... 2,850 psi

**Flexural Strength** ..... 4,000 psi

### Shore D Hardness

ASTM D-2240..... 85 – 90

### Bond Strength

ASTM D-4541 ..... 425 psi

### Abrasion Resistance

ASTM D-4060 ..... 0.08 mg

**Pot Life** ..... 35 min

Cure Time

@ 77°F..... 10-12 hours

*Color Stability by X-Rite Colorimeter:*

*No detectable change after 500 hours using the "b" axis*

*The data shown above reflects typical results based on laboratory testing under controlled conditions. Reasonable variations from the data shown above may result.*

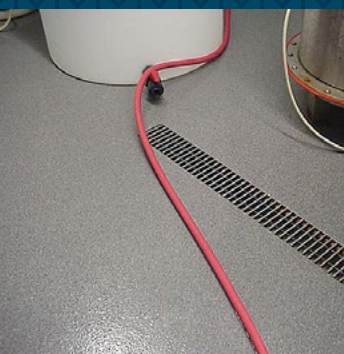
## TEXTURES

**Orange Peel:** Offers a smooth easily cleaned surface with a slight texture.

**Translucent Aggregates:** Can be incorporated into the top coats to offer a degree of slip resistance to meet the needs of the end user.

**Medium:** Smooth aggregates with peaks and valleys to mitigate trapped water under foot.

**Aggressive:** Smooth and angular aggregates with a thin polymer binder to lock in aggregates but not masking slip resistance.



## UV RESISTANCE

**Normal:** Recommended for dark or Medium colors, except blue.

**Ultra U.V. Resistant:** Recommended for whites, blues and other light color combinations.

## COLORS

15 Standard Colors. Custom colors available.



Bracken



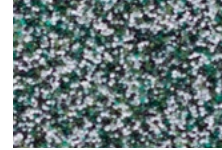
Cedar



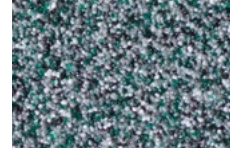
Copperhead



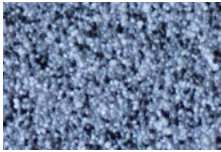
Coyote



Glade



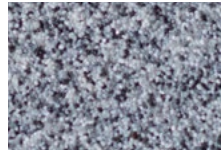
Juniper



Karst



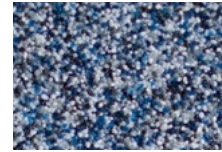
Osprey



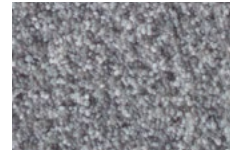
Rime



Sandbar



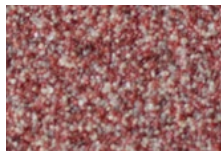
Surf



Torrent



Umbr



Wildfire



Zephyr

## MOISTURE SLAB TEST

One of the following three methods shall be used to determine moisture content of slab at time of application. These tests only measure the specific area tested at the time of the test and are not predictors of future substrate conditions.

ASTM F-2170 in situ Relative Humidity Test. Follow test procedures of manufacturer of testing equipment. Reading should be below 80%. If above 80%, refer to HydraBond.

## SURFACE PREPARATION

**Concrete:** Apply only to clean, dry and sound concrete substrates that are free of all coatings, sealers, curing compounds, oils, greases or any other contaminants. New concrete should be cured until moisture content is below manufacturers recommended standards. Concrete that has been contaminated with chemicals or other foreign matter must be neutralized or removed. Remove any laitance or weak surface layers. Surface shall be prepared by recirculating vacuum Shotblast equipment and/or diamond grinder to a profile of CSP-3 (ICRI standard). Moisture vapor transmission should be tested as directed in MOISTURE SLAB TESTS SECTION. All surface irregularities, cracks, expansion joints and control joints should be properly addressed prior to application.

*DESCO warrants its products to be free from defects in material and workmanship. DESCO's sole obligation and Buyer's exclusive remedy in connection with the products shall be limited, at DESCO's option, to either replacement of products not conforming to this warranty or credit to Buyer's account in the invoiced amount of the nonconforming products. Any claim under this Warranty must be made by Buyer to DESCO in writing within five days of Buyer's discovery of the claimed defect, but in no event later than the expiration of the applicable shelf life, or one year from the delivery date, whichever is earlier. Buyer's failure to notify DESCO of such nonconformance as required herein shall bar Buyer from recovery under this warranty.*

*Any recommendation or suggestion relating to the use of the products made by DESCO, whether in its technical literature, or in response to specific inquiry, or otherwise, is based on data believed to be reliable; however, the products and information are intended for use by Buyers having requisite skill and know-how in the industry, and therefore it is for the Buyer to satisfy itself of the suitability of the products for its own particular use, and it shall be deemed that Buyer has done so, at its sole discretion and risk. Variation in environment, changes in procedures of use, or extrapolation of data may cause unsatisfactory results. DESCO cannot guarantee that color will conform to sample, if provided.*

*DESCO makes no other warranties concerning this product. No other warranties, either expressed or implied, or statutory, such as warranties of merchantability or fitness for a particular purpose, shall apply. In no event shall DESCO be liable for consequential or incidental damages.*

## PRECAUTIONS

Substrate should be sloped to drain to prevent standing water or chemicals. As with any surface, all spills should be removed as soon as possible to prevent a slipping hazard

A sheet good moisture barrier as designated by ASTM E-1745 Class A should be in contact with bottom side of concrete slabs on grade. A lacking or ineffective vapor barrier may cause moisture related problems, debonding, bubbling or discoloration.

Concrete should be poured with a water cement ratio of 0.45 and 0.5.

A slump in the range of 3 to 4 inches, which can be increased by the use of super plasticizers.

Curing by ASTM C-171 sheet materials for curing concrete.

Do not apply granite systems when temperature is less than 50°F above the dew point.

Do not apply when substrate temperatures are below 50°F or above 95°F. (Material cures slower at cooler temperatures and working time will be substantially reduced at higher temperatures.)

Water from outside sources can cause water whitening of uncured polymer material.

Confirm product performance in specific chemical environment prior to use.